

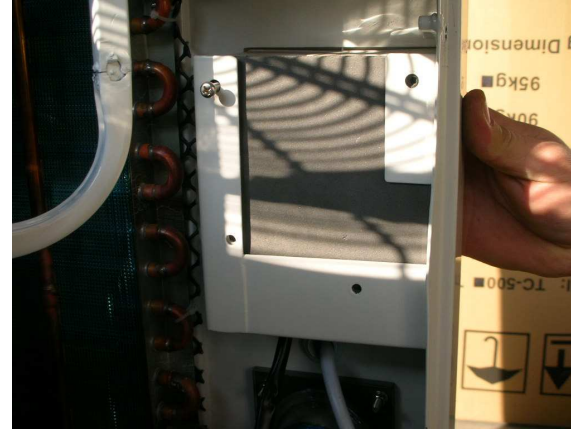
1° STAGE

- Unmount 2 plates showed in image. Then unmount electric box, and lay it down making attention, because it can damage painting.



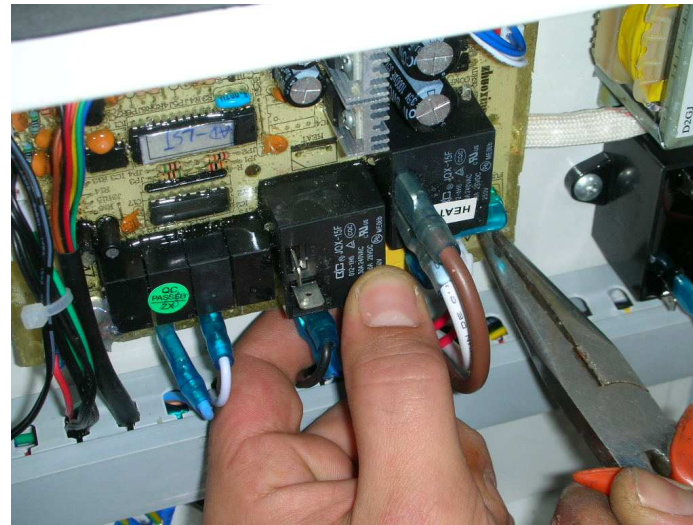
2° STAGE

- Unscrew 4 screw that stop display box.
- Then, unmount the display box.
- Unscrew 2 screw showed in images and replace the display board (there is 4 screw behind box grey part)



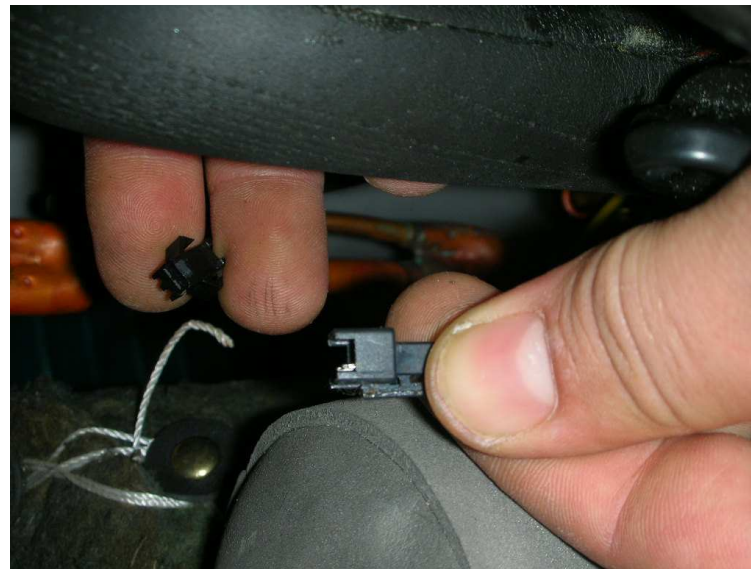
3° STAGE

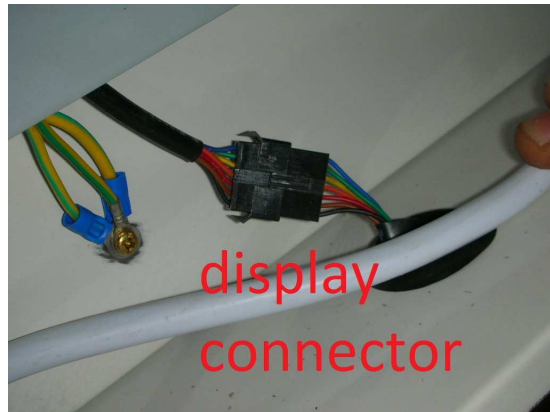
- Mount the display box and electric box.
- Now replace Main board as show in image
- Look next step to watch how connect right cable.



Don't touch connectors in 2
boards.

There is the specific connector
for every cable in the middle of it





- S1= probe water temp.
- S2= probe condenser copper temp.
- S3= ambient temp.

