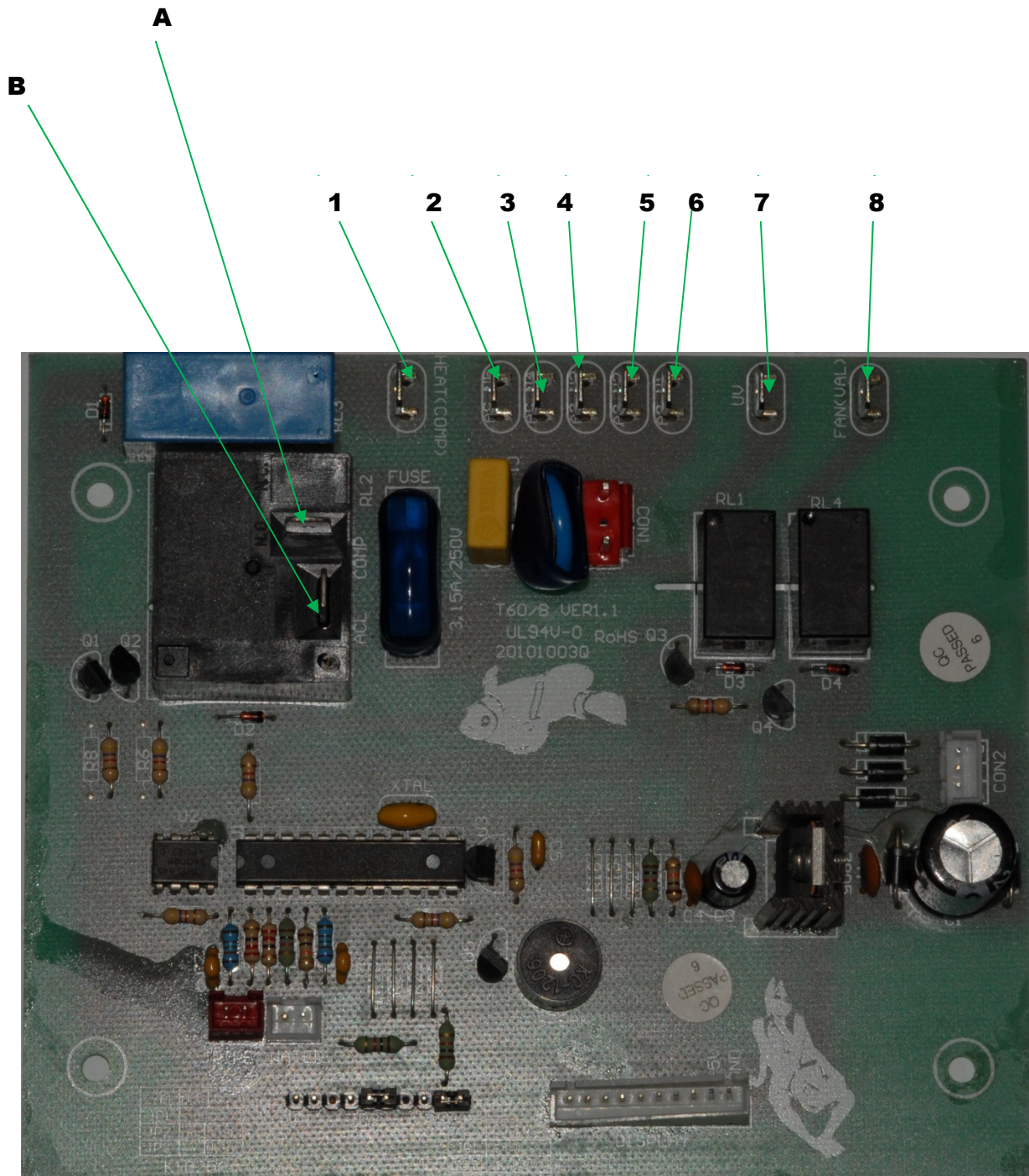


## Wiring diagram for green thermostat board for TC-TR30/60



- A: Black wire to loom**
- B: Red wire to mains switch**
- 1: 2 x Red wire to heaters**
- 2: 1 x White thick wire to capacitor**
- 3: 2 x Blue wire to heaters**
- 4: 1 x Blue thick wire to switch**
- 5: 1 x Blue thin wire to UV**
- 6: 1 x White wire thin to loom**
- 7: 1 x Purple wire to UV**
- 8: 1 x Black thin wire to loom**